



# DOPAMINE REPRODUCIBILITY

Application note # QAN-0050

## PARAMETERS

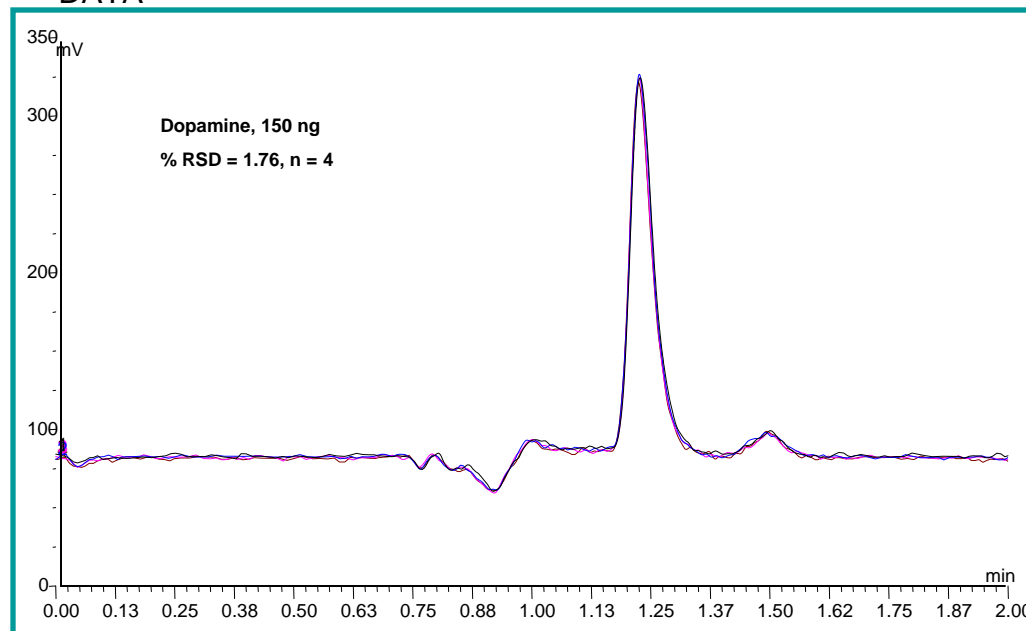
### NQAD

GAS: Air  
FILTER: 1.3 sec  
GAIN: 50x  
EVAPORATION TEMP: Off

### HPLC

MOBILE PHASE: 15:85 MeOH: 1% TFA in Water  
FLOW RATE: 0.5 mL/min  
COLUMN: Phenomenex Synergi, 4u, 150 x 2.00 mm  
INJECTION VOLUME : 10  $\mu$ L  
CONCENTRATION: 150 ng dopamine

## DATA



**QUANT TECHNOLOGIES,  
LLC**  
1463 94<sup>TH</sup> Lane NE  
Blaine, MN, USA 55449  
763-398-0508  
[www.Quant-NQAD.com](http://www.Quant-NQAD.com)