



USE NQAD IN TANDEM WITH UV TO OBTAIN A COMPLETE PROFILE OF SAMPLE COMPONENTS

Application note # QAN-0078

PARAMETERS

NQAD

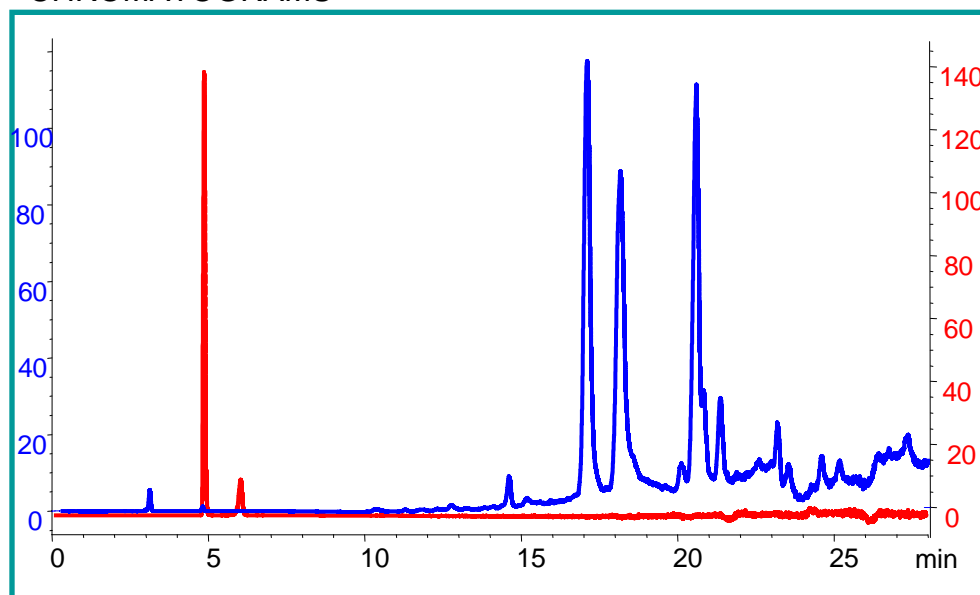
GAS: Air
FILTER: 1.3 sec
GAIN: 1X
EVAPORATION TEMP: OFF

HPLC

MOBILE PHASE A: Water
MOBILE PHASE B: ACN
METHOD: 0-95% B in 40 minutes

FLOW RATE: 1.0 mL/min
COLUMN: Alltima amino 100A, 250 x 4.6 mm, 5u
COLUMN TEMP: Ambient
INJECTION VOLUME : 10 μ L
ANALYTE: Bigalow[®] blueberry caffeine free tea
CONCENTRATION: 5 g tea steeped for 5 minutes in 100C water (20 mL)

CHROMATOGRAMS



— Tea mixture
— 1 mg/mL caffeine



QUANT TECHNOLOGIES, LLC
1463 94TH Lane NE
Blaine, MN, USA 55449
763-398-0508
www.Quant-NQAD.com